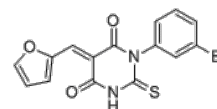


Product Name : SMIFH2
Cat. No. : PC-62426
CAS No. : 340316-62-3
Molecular Formula : C₁₅H₉BrN₂O₃S
Molecular Weight : 377.212
Target : Microtubule/Tubulin
Solubility : 10 mM in DMSO



Biological Activity

SMIFH2 is a small molecule **formin** homology 2 domains inhibitor of formin-mediated actin assembly, targets formins from evolutionarily diverse organisms including yeast, nematode worm, and mice with IC₅₀s of 5-15 μ M.

SMIFH2 prevents both formin nucleation and processive barbed end elongation and decreases formin's affinity for the barbed end.

SMIFH2 disrupts formin-dependent, but not Arp2/3 complex-dependent, actin cytoskeletal structures in fission yeast and mammalian NIH 3T3 fibroblasts at low micromolar concentrations.

References

Rizvi SA, et al. *Chem Biol*. 2009 Nov 25;16(11):1158-68.

Ziske MA, et al. *Biochem Biophys Res Commun*. 2016 Mar 25;472(1):33-9.

Borinskaya S, et al. *Mol Biol Cell*. 2016 Jan 15;27(2):247-59.

Isogai T, et al. *Sci Rep*. 2015 Apr 30;5:9802.

Caution: Product has not been fully validated for medical applications. Lab Use Only!

E-mail: tech@probechem.com